

A family of learning.

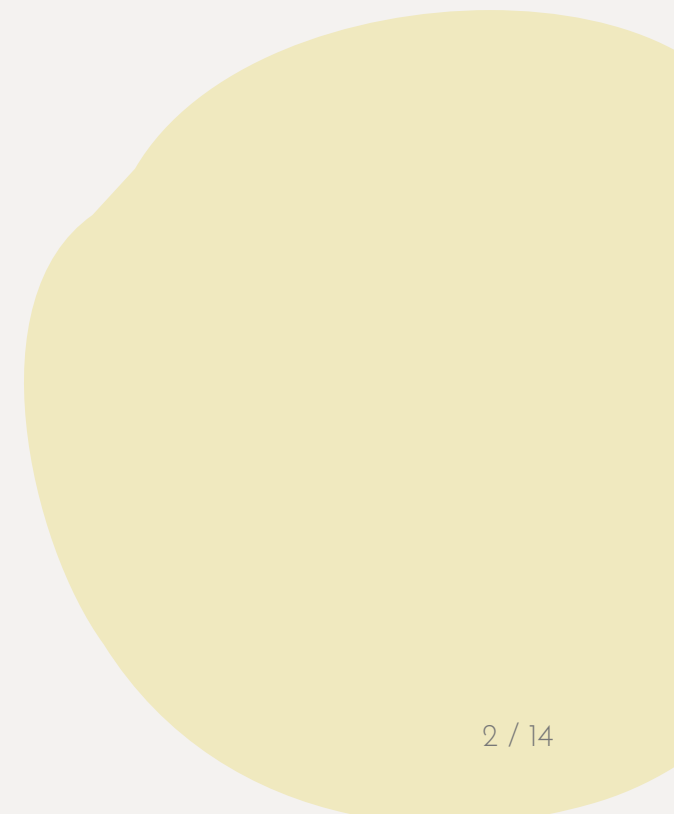
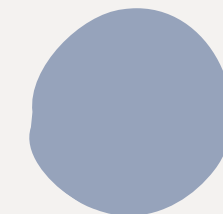
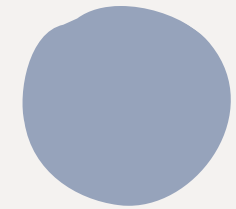
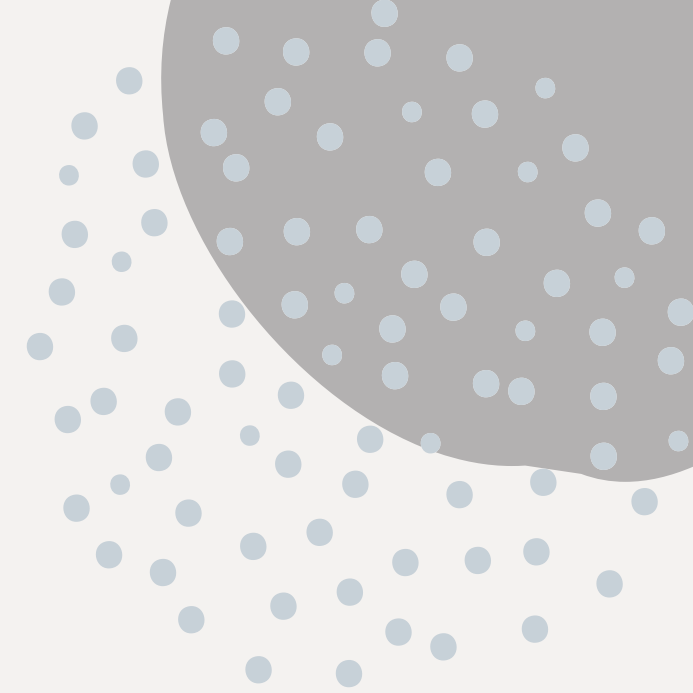
# impressions

ADULT LITERACY

# Table of Contents

## BOOKLET OUTLINE

Page 3-4	Concept, Design, & Branding Process
Page 5	Annotated Floor Plan
Page 6	Rendered Floor Plan
Page 7	Research Summary & Design Goals
Page 8	Exterior Renderings
Page 9	Reception Design
Page 10	Office Space Perspectives
Page 11	Interior Perspectives
Page 12	Men's & Women's Restrooms
Page 13	Café Perspective
Page 14	Model Images



# Post-Impressionism & Fluidity

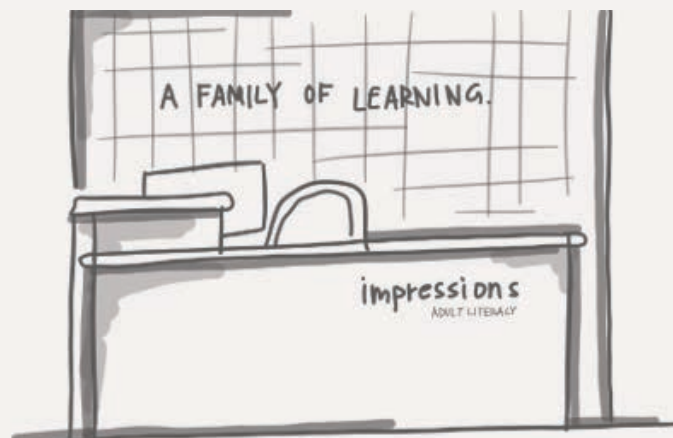
**ELEMENTS & PRINCIPLES:** Design elements such as line, repetition, texture, and color develop balance, movement, and harmony within the facility.

## THE CONCEPT:

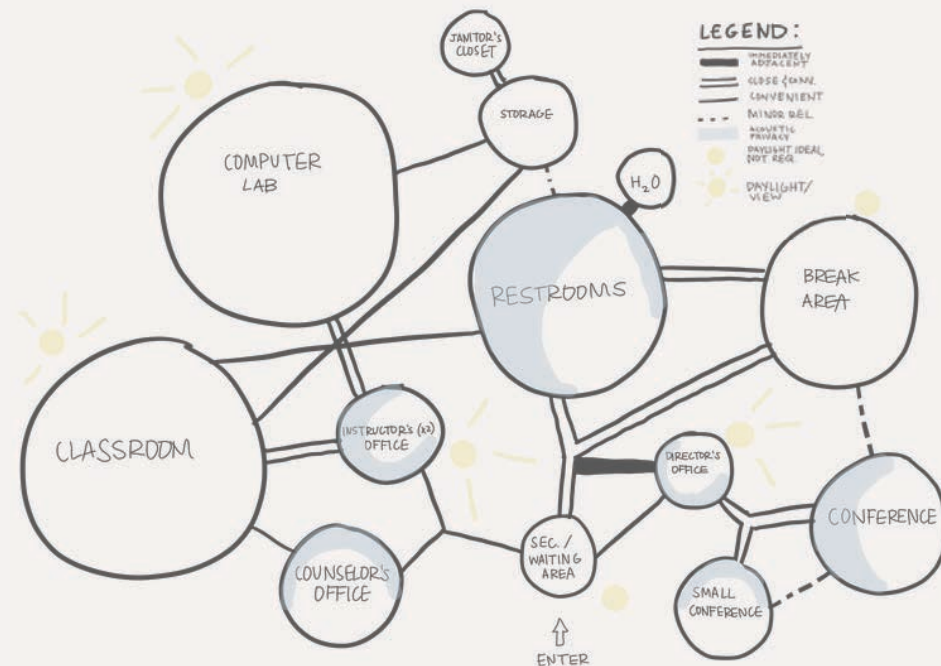
Just as a blank canvas symbolizes new opportunities, Impressions ADULT LITERACY helps clients grasp their goals. The design of this 4,050 S.F. space envelops fluidity and rhythm, successfully reflecting the post-impressionist style of Henri Matisse's painting *Landscape at Collioure*. This style embraces new thinking and modernity which is seen through contemporary furniture combined with smooth curvilinear shapes throughout the construction. Characterized by seeming "unfinished", an impressionist painting likely has natural, raw canvas showing behind the artwork which is opportunely imitated by the repetition of deep wood displayed throughout the space. Matisse often faced harsh feedback from his works, as do adult learners face criticism for seeming "uneducated". However, introducing various residential inspired materials, clients will feel welcomed and comfortable. Further extracting elements from Matisse's painting, the spontaneous brushstrokes are subtly emulated by utilizing various complementing textures creating a sense of harmony. The blend of blue and yellow shades promote a healthy balance of calmness and visual stimulation effectively facilitating the learning process for the clients.



INITIAL MATERIAL INSPIRATION



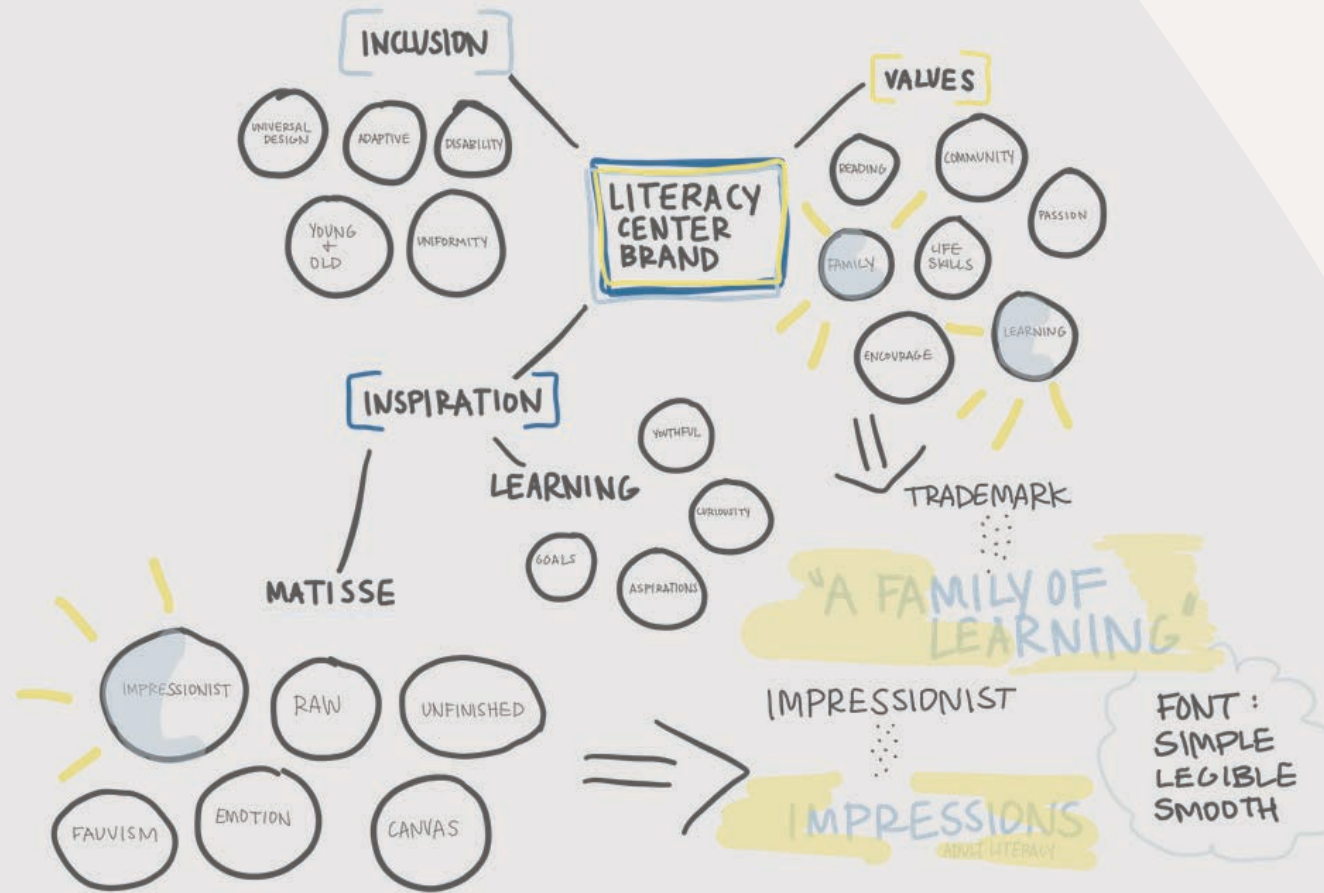
RECEPTION IDEATION SKETCH



RELATIONSHIP DIAGRAM



# Concept & Design



BRANDING DIAGRAM



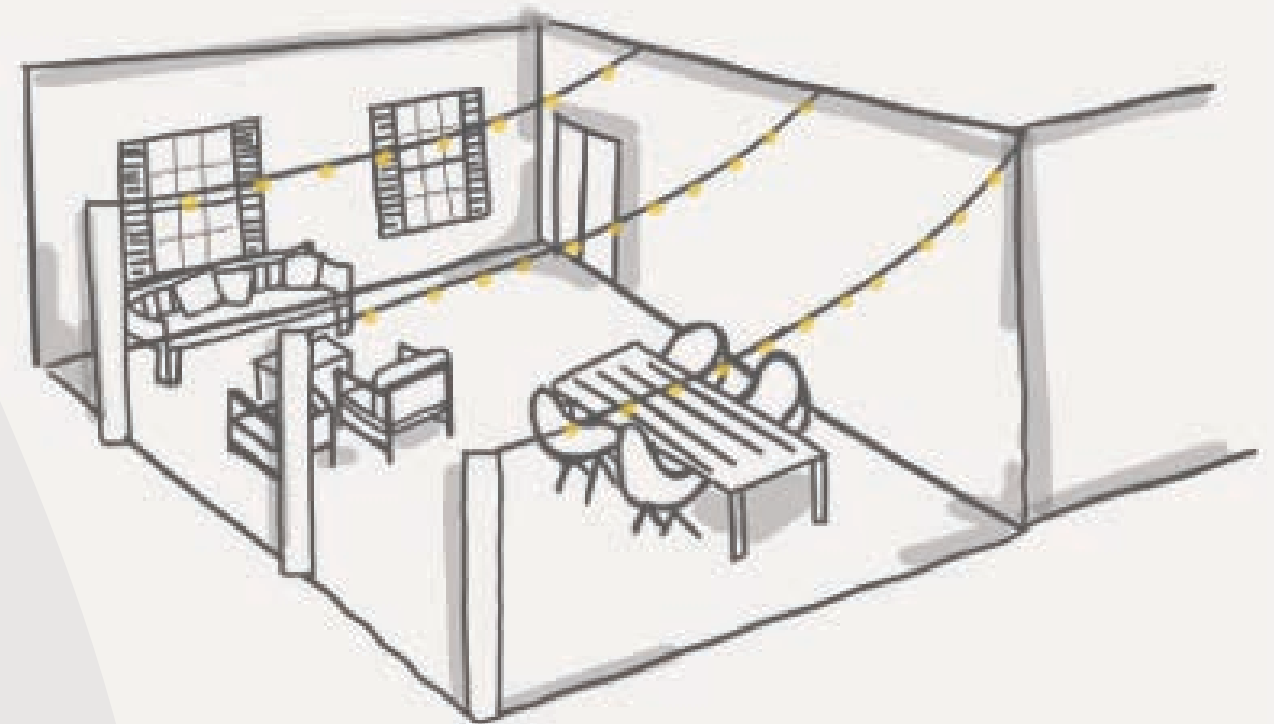
FRONT ENTRANCE SKETCH



INTERIOR DOOR AND SIGNAGE SKETCH



PRIVATE STUDY ROOM SKETCH



OUTDOOR LOUNGE AREA SKETCH

# Key Features:

Full service kitchenette allows for easy mealtime preparation.

Monitor screen in the waiting area notifies visitors of upcoming events.

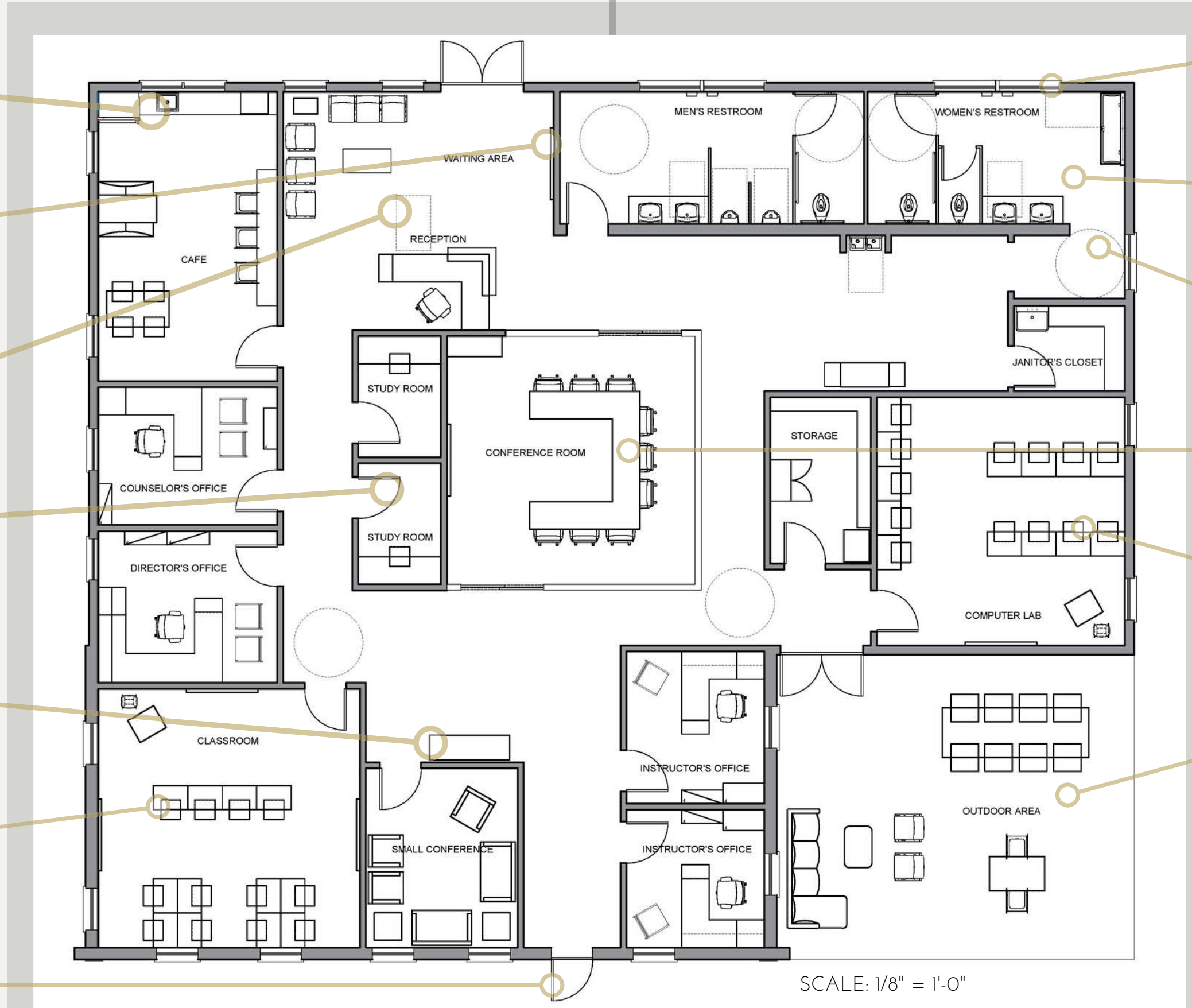
30" x 48" dashed rectangle indicates clear floor space for wheelchair users.

A pair of private study rooms double as a private testing area for those clients with learning or cognitive disabilities.

Bench seating located near offices provides a comfortable waiting space for students meeting with instructors.

3 monitor screens ensure visibility regardless of student stature or sight ability.

ID scan required back entry for student and faculty use aids in additional privacy & security for clients.



Clerestory windows in restrooms provide both natural daylight and complete privacy.

ADA accessible restrooms & drinking fountains make for an all inclusive facility.

60" diameter circle indicates wheelchair turning radius.

"U"- shaped conference table allows for easy visibility for everyone.

Wheels on both desks & chairs promote a "mobile" classroom enabling collaboration when appropriate.

Outdoor lounge area provides an optional outdoor dining & study space encouraging socialization among students & teachers; additionally, this space is optimal for special events.

SCALE: 1/8" = 1'-0"

# Rendered Floor Plan



SCALE: 1/8" = 1'-0"

# How does Impressions accomplish its design goals?

At Impressions ADULT LITERACY, the client is the primary concern. With this in mind, the facility was created through the concept of universal design. Impressions ensures that all students feel included through the use of wayfinding, cognitive mapping, and ADA accessibility. Features such as the restrooms, drinking fountains, and counter heights aid in this objective making sure that all users are accommodated--regardless of stature, age, or physical ability. In addition, non-slip, low pile carpeting exhibits wayfinding features, also absorbing sound ensuring acoustic privacy. Signage outside each door includes both raised letters and pictures keeping in mind that some students cannot read.

Likewise, paint colors are indicative of spatial use. For example, instructional settings such as the classroom and computer lab display a painted band around the top perimeter of the room. Also, the corridors boast a neutral greige while the back exit is highlighted by a more saturated blue. The focal wall in the grand entry to the facility further aid in cognitive mapping.

Lastly, research proves that a fine balance of cool and warm colors facilitate a learner's experience. The complementary color scheme of blue and yellow were extracted from Matisse's inspiration painting and accomplish this goal. The visually stimulating yellow is contrasted by its counterpart, soothing shades of blue. The overall concept of fluidity lends itself to soft, yet clean lines seen throughout the entire center, ultimately allowing a seamless flow. Impressions ADULT LITERACY aims at cultivating "a family of learning" which is equally achieved through the intentional design of the space.



# Exterior Renderings



Entry Facade



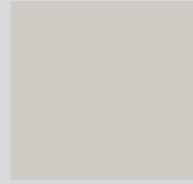
Axonometric Floor Plan



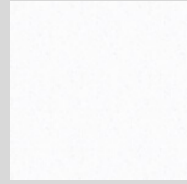
Perspective



# Reception & Waiting Area



WALL COLOR



LIGHT GREY QUARTZ COUNTERTOP



CARPET TILE



ERGONOMIC RECEPTION CHAIR



Upon entry, visitors are greeted by a receptionist & the phrase "A family of learning". Notable details of the space include a vaulted ceiling. The artwork on the wall is reminiscent of brush strokes & the light fixture highlights curved lines.

Perspective

WAITING AREA SOFA



GUEST CHAIR



# Office Spaces



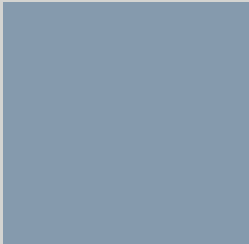
Counselor's Office



DESK LAMINATE FINISH



DESKTOP FINISH



WALL COLOR

Instructor's offices are equipped with Roman shades for additional privacy; the soft folds created reflect the concept of fluidity.



Instructor's Office



OFFICE TASK CHAIR



ACCENT LAMP



GUEST CHAIR

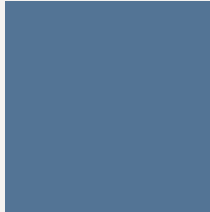
Each office is supplied with a desktop monitor arm allowing easy viewing access for guests when desired.

# Interior Perspectives

WALL COLOR



WALL COLOR



CONFERENCE TABLE  
COUNTERTOP



CARPET TILE



A pair of acoustic panels enhance the overall audio quality in the large conference room.



Computer Lab



Large Conference Room

Frosted glass surrounds the conference walls adding visual privacy.

Adjustable height desks & ergonomic student chairs adapt easily to optimize comfort to each students' preference.



STUDENT CHAIR FABRIC



CONFERENCE CHAIR



STUDENT DESK



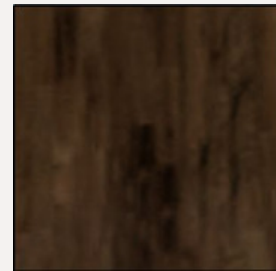
STUDENT CHAIR

# Men's & Women's Restrooms

TEXTURE WALL



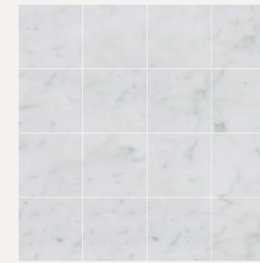
MIRROR, DOOR, & VANITY FINISH



VANITY LIGHT FIXTURE



MARBLE FLOORING



WALL COLOR



WOMEN'S



The women's restroom is equipped with an ADA accessible stall and a baby changing station.

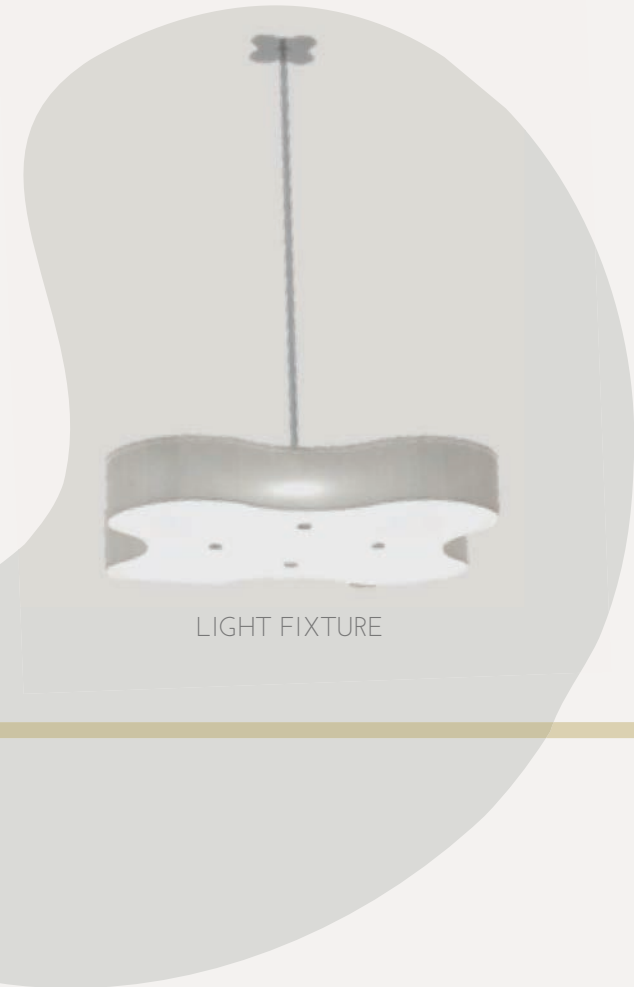
MEN'S



The men's restroom has an ADA accessible stall and an ADA accessible urinal.

# Café Perspective

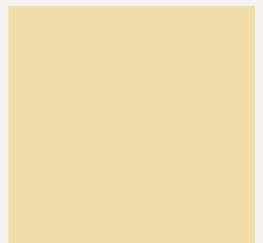
Recessed can lights are hung directly above the kitchenette for additional lighting & visibility.



LIGHT FIXTURE



BACKSPLASH & ACCENT WALL



WALL COLOR



MARBLE FLOORING



BARSTOOLS  
UPHOLSTERED IN  
LEATHER

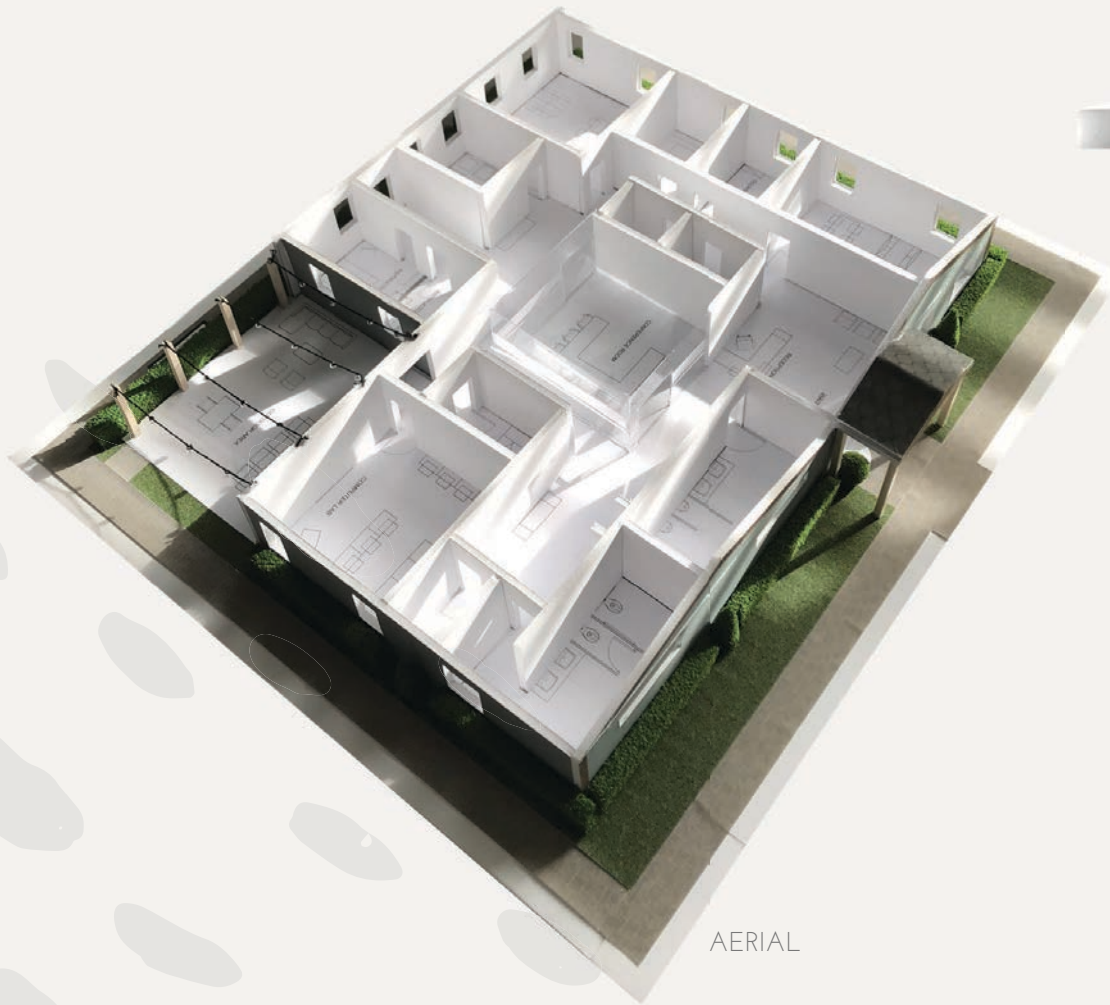
# Model Images



FRONT



BACK



AERIAL



PERSPECTIVE